

Setting up an iPod for use with a FONIX Audiometer

Contents of the FONIX iPod Audiometric Package

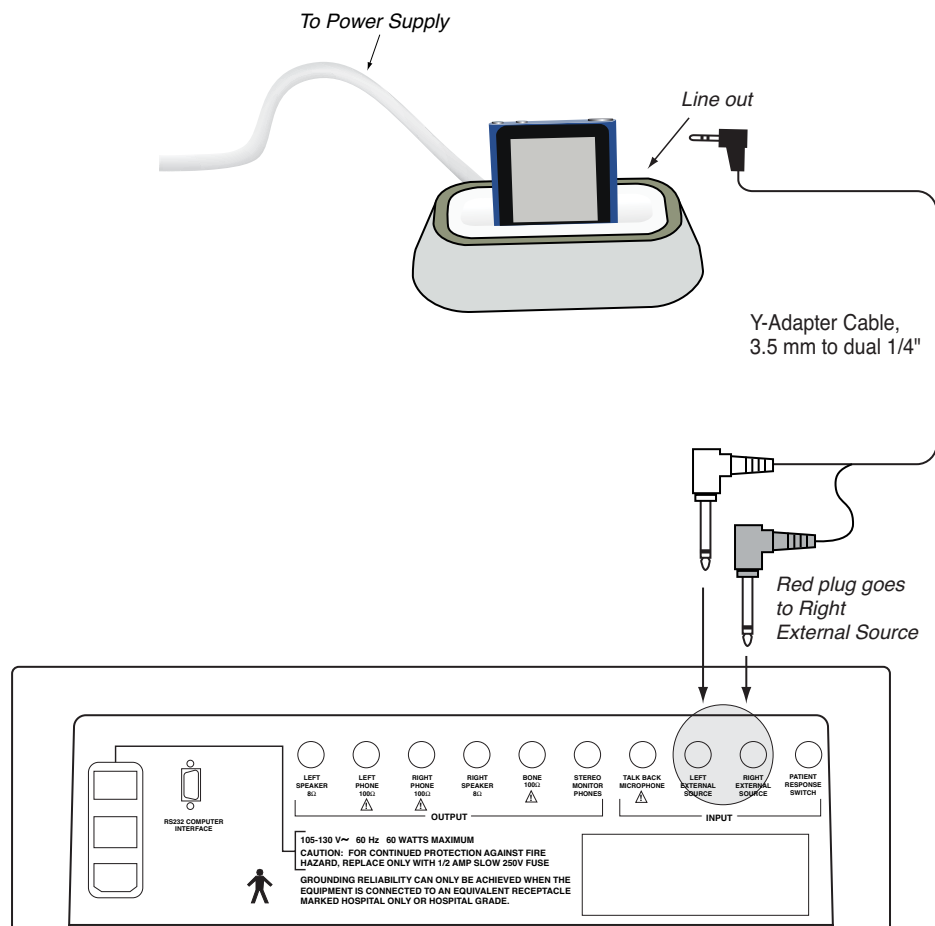
The FONIX iPod Audiometric package includes:

- iPod nano loaded with the FONIX Audiometric Speech Tests
- iPod dock
- Dock power supply
- USB Cable
- Y-Cable

Setup

To set up the iPod for use with the FONIX audiometer:

1. Connect the power supply to the iPod dock.
2. Connect Y-Cable to the iPod dock and the Left External Source and Right External Source socks on the back of your FONIX audiometer.
3. Insert iPod into dock.

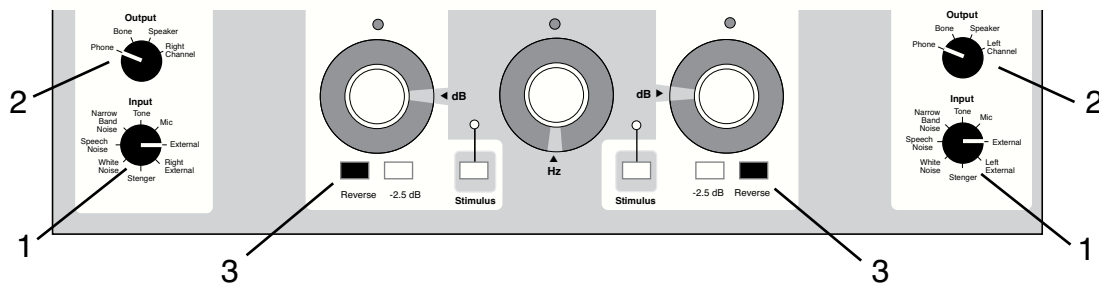


FA-10/12 Back Panel

Calibration

To calibrate the iPod with the audiometer:

1. Set the left and right Input knobs to External.
2. Set the left and right Output knobs to Phone.
3. Push the Reverse buttons located beneath each Hearing Level dial so that the Stimulus lights are on continuously.
4. Play the calibration track on the iPod:
 - a. Press the button on the top right to turn on iPod. (Touch the screen on the iPod to select or run your finger left or right to change to next screen.)
 - b. Select Playlists→Speech Test. Run your fingers up and down the screen to move the screen up and down in a particular menu.
 - c. Select the Calibration track by touch the track name on the screen to play the track.
 - d. See your iPod manual for more details on using the iPod if needed.
 - e. Look at the VU meters on the audiometer and use the audiometer left and right External knobs to adjust the calibration so that the steady calibration tone is set to 0.



FRYE ELECTRONICS, INC.
P.O. Box 23391 • Tigard, OR 97281-3391 • USA
(503) 620-2722 • (800) 547-8209
Fax: (503) 639-0128
www.frye.com • e-mail: sales@frye.com