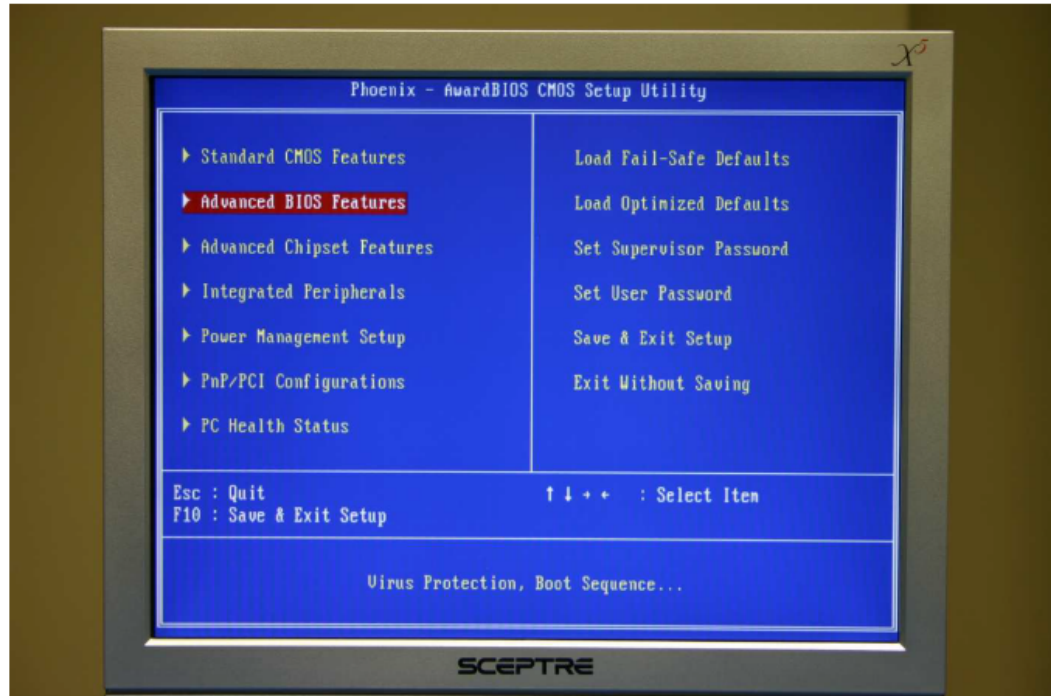


Fonix 8000 BIOS Setup and Settings

8000 BIOS Setup Instructions

1. Turn off the 8000
2. Plug a USB computer keyboard into one of the USB ports on the back of the 8000
3. Press and hold the Delete key on the keyboard
4. Turn on the 8000
5. Continue holding the delete key until the BIOS setup screen appears as shown below



6. Select "Standard CMOS Features" and press enter.
7. Set each item to match the defaults listed on the following pages.
8. Use the up and down arrows to select an item to change then press enter to change it.
9. When the settings match the defaults press ESC.
10. Repeat this process for Advanced BIOS Features, Advanced Chipset Features, Integrated Peripherals, Power Management Setup and PnP/PCI Configurations.
11. When all of the settings match Press F10
12. Press enter to "SAVE to CMOS and EXIT"
13. At this point the 8000 should boot up normally.

Bios Settings for Fonix 8000

Standard CMOS Features

Date (mm/dd/yyyy): Mon Aug 3 2009

Time (hh/mm/ss): 08:29:30

IDE Primary Master [SanDisk SDCFH2-002G] (*or other compact flash drive*)

IDE HDD Auto-Detection [Press Enter]

IDE Primary Master [Auto]

Access Mode [Auto]

IDE Primary Slave: [None]

IDE HDD Auto-Detection [Press Enter]

IDE Primary Master [Auto]

Access Mode [Auto]

Drive A: [None]

Drive B: [None]

Video [EGA / VGA]

Halt on [All But Keyboard]

Advanced BIOS Features

Virus Warning [Disabled]

CPU Internal Cache [Enabled]

First Boot Device [USB-ZIP]

Second Boot Device [HDD-0]

Third Boot Device [Disabled]

Boot Other Device [Disabled]

Swap Floppy Drive [Disabled]

Boot Up Floppy Seek [Disabled]

Boot Up NumLock Status [Off]

Gate A20 Option [Fast]

Typematic Rate Setting [Disabled]

Typematic Rate (Char/Sec) 6

Typematic Delay (Msec) 250

Security Option [Setup]

OS Select For DRAM > 64MB [Non-OS2]

Full Screen LOGO Show [Disabled]

Small Logo(EPA) Show [Enabled]

Advanced Chipset Features

Virus Warning [Disabled]

CPU Internal Cache [Enabled]

First Boot Device [USB-ZIP]

Second Boot Device [HDD-0]

Third Boot Device	[Disabled]
Boot Other Device	[Disabled]
Swap Floppy Drive	[Disabled]
Boot Up Floppy Seek	[Disabled]
Boot Up NumLock Status	[Off]
Gate A20 Option	[Fast]
Typematic Rate Setting	[Disabled]
Typematic Rate (Char/Sec)	6
Typematic Delay (Msec)	250
Security Option	[Setup]
OS Select For DRAM > 64MB	[Non-OS2]
Full Screen LOGO Show	[Disabled]
Small Logo(EPA) Show	[Enabled]

Advanced Chipset Features

Memory Frequency	[200 MHz]
Video Memory Size	[8M]
Output display	[CRT]
TFT / LVDS Resolution	[800 x 600]
Onboard Audio	[Enabled]
Onboard USB Controller	[Enabled]
Onboard USB2.0	[Enabled]
Onboard USB UDC	[Disabled]
onboard USB OTG	[Disabled]
Onboard IDE	[Enabled]
Memory Hole At 15M-16M	[Disabled]

Integrated Peripherals

Master Drive PIO Mode	[Auto]
Slave Drive PIO Mode	[Auto]
IDE Primary Master UDMA	[Auto]
IDE Primary Slave UDMA	[Auto]
IDE DMA transfer access	[Enabled]
Onboard Lan1 Control	[Enabled]
Onboard Lan2 Control	[Disabled]
Onboard LAN Boot Rom	[Disabled]
Digital I/O Device	[Press Enter]
IDE HDD Block Mode	[Enabled]
PS/2 Mouse Support	[Enabled]
Onboard FDC Controller	[Disabled]
Onboard Serial Port 1	[Disabled]
Onboard Serial Port 2	[3F8/IRQ4]
Serial Port 2 I/F	[RS232]
UART Mode Select	[Normal]
UR2 Duplex Mode	[Half]
Onboard Parallel Port	[378/IRQ7]
Parallel Port Mode	[SPP]
Backlight controller	[The Medium Light]

Power Management Setup

ACPI Suspend Type	[S1(POS)]
Power Management	[APM]
PWRON After PWR-Fail	[Off]
MODEMUse IRQ	[N/A]
PME Event function	[Enabled]
Soft-Off by PWR-BTTN	[Instant-Off]
Power-On by Alarm	[Disabled]

PnP/PCI Configurations

PNP OS Installed	[Yes]
Init Display First	[Onboard]
Reset Configuraiton Data	[Disabled]
Resources Controlled By	[Manual]
IRQ Resources	[Press Enter]
IRQ-3 assigned to	[Reserved]
IRQ-4 assigned to	[PCI Device]
IRQ-5 assigned to	[Reserved]
IRQ-7 assigned to	[PCI Device]
IRQ-10 assigned to	[PCI Device]
IRQ-11 assigned to	[PCI Device]
Memory Resources	[Press Enter]
PCI/VGA Palette Snoop	[Disabled]
ISA Setup	[Press Enter]
ISA I/O 3E0-3EFh	[Enabled]
ISA I/O 2E0-2EFh	[Enabled]
ISA I/O 100-13Fh	[Disabled]
ISA I/O200-27Fh	[Disabled]
ISA I/O 300-37Fh	[Disabled]
ISA I/O A79h	[Disabled]
ISA memory CC000-CFFFFh	[Disabled]
ISA memory D0000-D7FFFh	[Disabled]
ISA memory D8000-DFFFFh	[Disabled]