

WinCHAP

Installation Manual

WinCHAP is a Windows-based FONIX Computer Hearing Aid Program that is used for interfacing your FONIX instruments with your personal computer. Store all your measurements while maintaining a complete office management database. In the WinCHAP Office Manager, you can store extensive client, hearing aid, manufacturer, test instrument, and personnel information. This information can be entered manually or imported from NOAH 3. In the WinCHAP Test Menu, you can perform hearing aid and audiometric measurements and store them electronically, eliminating the need for paper files.

Requirements

- Windows operating system: 98, 2000, Me, NT 4.0, XP, and Windows 7 (32-bit and 64-bit)
- Pentium computer or equivalent
- 32 MB of RAM (64 MB recommended)
- 30 MB of free hard disk space for the program to function optimally. Large databases could require an additional 100 MB or more of disk space.
- Video resolution: 1024 x 768
- WinCHAP has been tested on the following software. If your hearing aid analyzer has a previous software version, some features may not have complete functionality:

7000: 1.63

FP35: 5.01

8000: 2.01

6500-CX: 4.91

FP40/FP40-D: 3.70

FA10/FA12: all versions

The 6500-CX and FP40 hearing aid analyzers, and FA10/FA12 audiometers must be equipped with the RS232 Option. RS232 is included on all 8000, 7000, and FP35 hearing aid analyzers.

Setup

In order for WinCHAP to gather measurement data from your FONIX equipment, your FONIX analyzer/audiometer must be equipped with the RS232 protocol, and it must be connected to your computer using an RS232 cable. The FP35, 8000, and 7000 hearing aid analyzers include the RS232 capability as a standard feature. The RS232 capability is an option on the 6500-CX, FP40, and FP40-D hearing aid analyzers and all FONIX audiometers.

A USB serial cable comes with all FONIX equipment with the RS232 capability. The driver for this cable must be installed. Typically, the hardware wizard needs to run twice for complete installation of this cable.

If you are having intermittent connection problems and you have a desktop computer, we recommend installing an electronics card with additional RS232 ports and using a standard RS232/serial cable for your connection.

Once you have connected your computer to your analyzer, make sure to set the communications port on WinCHAP. See the Operator's manual for more information.

Installing WinCHAP

Installing WinCHAP is a fairly straightforward process.

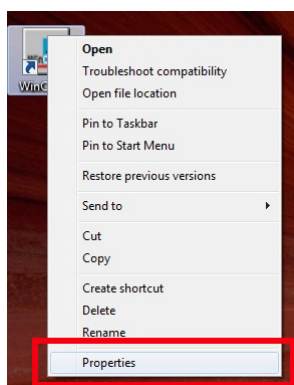
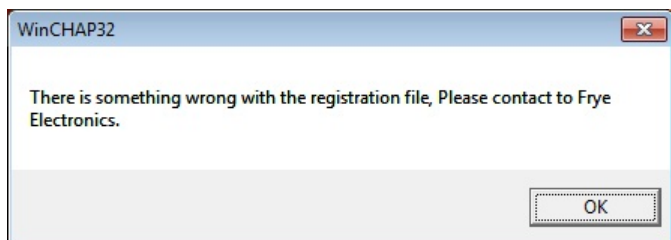
1. Un-install any previous versions of WinCHAP.
2. Backup any WinCHAP database files you may be using.
3. Close all programs running on your Windows system.
4. Insert the WinCHAP CD-ROM into your CD-ROM drive.
5. Wait for the installation program to run. If this doesn't happen automatically, run "setup.exe" on the WinCHAP disk.
6. Let the installation program guide you through the process.
7. After installation, you will need to connect your FONIX equipment to your computer and configure the connection.

Note 1: In some cases, an error message may open, indicating that one of the .dll files is in use. Click **Ignore** and continue the installation. In most cases, the installation will still be successful.

Note 2: If you are upgrading from WinCHAP version 2.0 or earlier, you must import your old WinCHAP database before it can be functional with the new version. This is not necessary if you are upgrading from WinCHAP 2.1 or above.

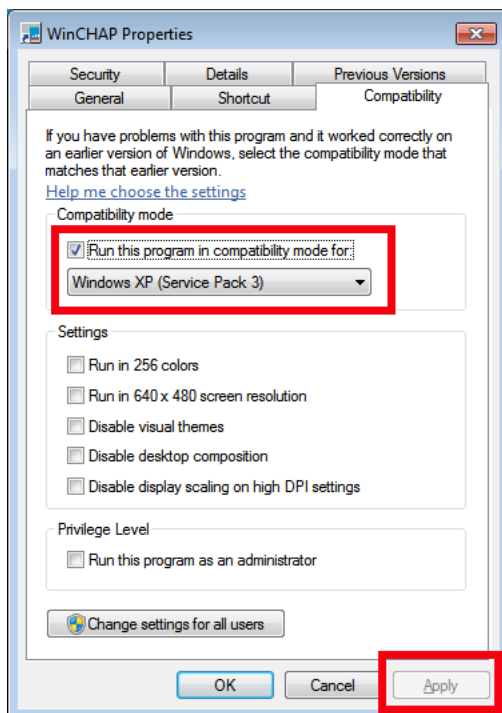
Installing WinCHAP on Windows 7

WinCHAP should install normally on a Microsoft 7 Operating System (32-bit or 64-bit). However, if you double-click on the WinCHAP icon to open the program, you may get this message:



To fix this issue and run WinCHAP, right-click on the **WinCHAP** icon and select **Properties**.

This will open the WinCHAP Properties window. Select the **Compatibility** tab. Select **Run the Program in Compatibility Mode** and choose **Windows XP (Service Pack 3)**. Click **Apply**. This should allow WinCHAP to run normally on your Windows 7 system. The setting is saved automatically.



Uninstalling WinCHAP

You will need to uninstall WinCHAP from your computer before you can install a new version.

1. Press the **Start** button of your Windows operating system.
2. Select **Settings** and **Control Panel**.
3. Select **Add/Remove Programs**.
4. Find and highlight **WinCHAP** or **WinCHAP 32** in the list of programs.
5. Click the **Add/Remove** button. The install shield will guide you through the un-install process. **It should take just a few minutes.**

Backing up your database

It's a good idea to periodically backup your database. WinCHAP data is stored in a Microsoft Access database file, so to back up your data, you just need to make a copy of this file.

1. Open **WinCHAP**.
2. Open the **Settings** menu and click **Database Manager** to open it.
3. Open the **Tools** menu and select **Backup Database File**. This creates a backup of the database file in the backups sub-directory located in the directory where you installed WinCHAP (usually C:\program files\frye electronics\winchap)

Registering WinCHAP

If you purchased your copy of WinCHAP, or if you are receiving a free upgrade from a previous version of WinCHAP, both the serial number and the registration key should be included on the WinCHAP CD-ROM case.

If you have not yet registered your copy of WinCHAP, a window will pop up every time you open WinCHAP and ask if you would like to register it. Click Yes to input the serial number and registration key. Once this has been done, the prompts will no longer appear.

If you ordered a demo copy of WinCHAP in order to evaluate it, you can purchase a copy and thus receive the serial number and registration key by contacting us at:



FRYE ELECTRONICS, INC.

P.O. Box 23391 • Tigard, OR 97281-3391 • USA

(503) 620-2722 • (800) 547-8209

Fax: (503) 639-0128

www.frye.com • email: sales@frye.com